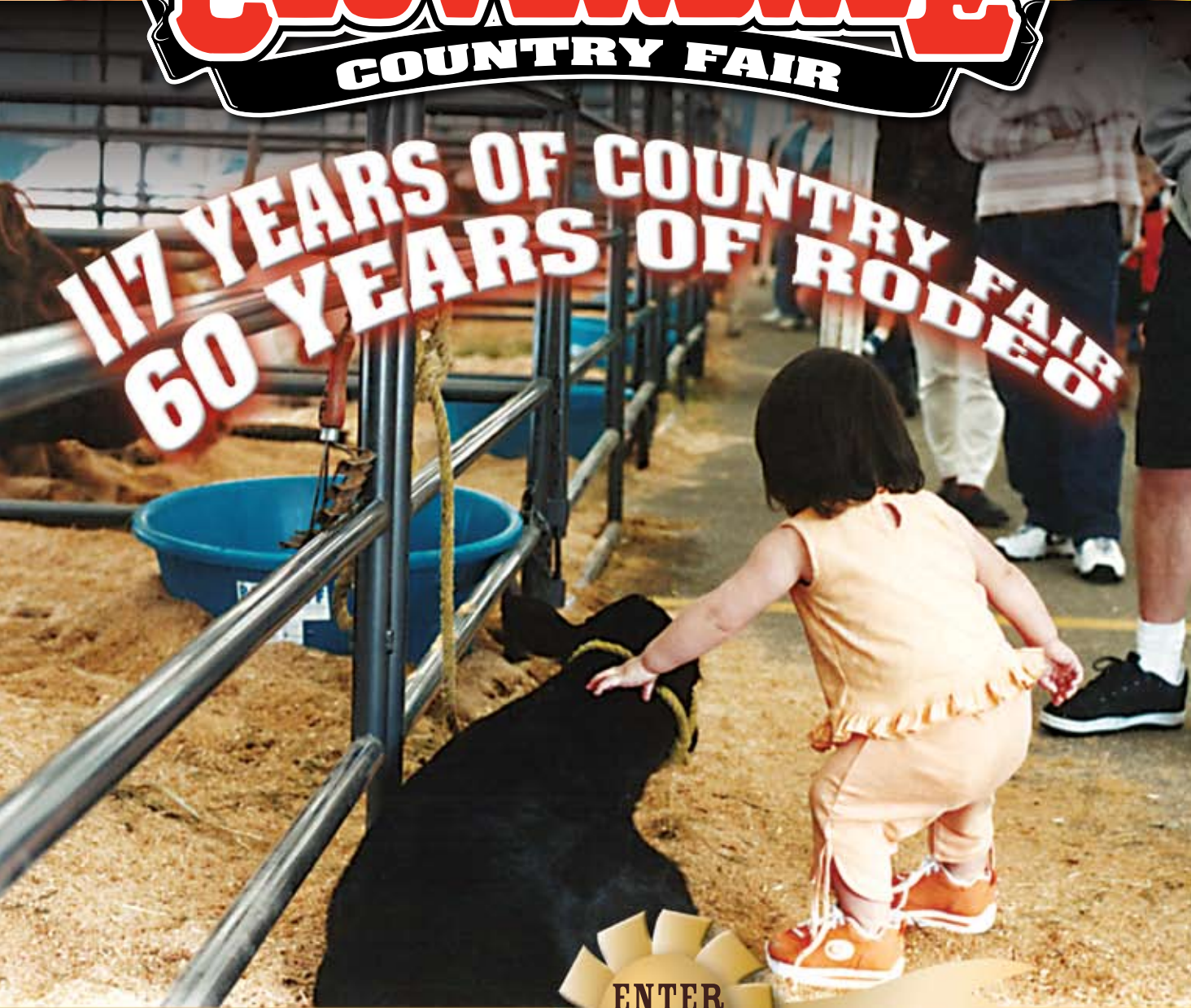




CLOVERDALE

COUNTRY FAIR

117 YEARS OF COUNTRY FAIR
60 YEARS OF RODEO



MAY 19TH-22ND 2006



Plan to Enter Now

2006 PRIZE BOOK

CLOVERDALE COUNTRY FAIR

2006 PRIZE BOOK 117th Anniversary

TABLE OF CONTENTS

Arts & Crafts	2
Floriculture/Horticulture	3
Home Cooking & Baking	4
Needlework	6
Photography	7
4-H Displays	7
Children's Arts & Crafts	8
Children's Horticulture/Floriculture	8
Children's Baking	9
Children's Needlework	9
Child & Youth Photography	9
General Rules & Regulations	10
Entry Form	11



From top left: Florian Kirner - Exhibition Chairman, Charlene Bayer, Ernie Bayer, Bel Carter, Ed Houlden, Elaine Ingeberg, Doug Jenkins, Rita Kettlewell, Irma Kirner, Bill Kools, Lucy Law, Lyn Melnechenko, Jean Oostenburg, John Tamis, Dorothy Todhunter, Mel Todhunter, Gord Williams, Marylou Williams, Maxine Wilson, Pat Wilson, Gary Wood (not shown)

CLOVERDALE RODEO & EXHIBITION
6050A - 176th Street, Surrey, B.C. V3S 4E7
Phone: 604-576-9461 Fax: 604-576-0216
www.cloverdalerodeo.com

CLASS #100: Arts & Crafts

Chair: Jean Oostenbrug 604-856-8887
Co-Chairs: Lynn Melnechenko 604-534-7838
Marian Powell 604-882-0760
Exhibit Building: Shannon Hall
Exhibits Received: 9:00am-8:00pm on Tuesday, May 16th
*Entry Forms: Must be received by 4:30pm April 28th, 2006

Division A: General - Open to any age
Division B: Ages 60-69 years
Division C: Ages 70-79 years
Division D: Ages 80-89 years
Division E: Ages 90 years and over
Division F: Handicapped
Division G: Group
Division H: Professional Division -
Person who has made \$500 or more from their art work

*Age of exhibitor **MUST** be shown on the entry form. Exhibitors may only enter 1 item per class section.*

We reserve the right to refuse any arts or crafts that are inappropriate to the division or is in poor condition. (eg. dirty, worn, broken, etc)

Section: Crafts

1. Birdhouse - Decorated - house may be purchased
2. Table Center - Festive theme, ie; Easter, Christmas, Birthday, etc.
3. Wreath - Decorated, any theme
4. Collage - Your choice of subject. Not to exceed 14" x 18"
5. Greeting Card - Any occasion (hand made)
6. Dressed Doll - Sewn outfit (doll may be purchased)
7. Dressed Doll - Crocheted outfit (doll may be purchased)
8. Dressed Doll - Knitted outfit (doll may be purchased)
9. Dressed Teddy Bear - (bear may be purchased - not to exceed 18" height)
10. Hand Made Doll - Entire entry must be hand made
11. Porcelain Doll
12. Stuffed Toy (Not a doll)
13. Stuffed Toy using fur fabric
14. Reverse Collage - Plate (stand must accompany plate)
15. Paper Tole - Your choice - Finished size not to exceed 26"x26" incl. frame
16. Ceramic - Glazed piece
17. Ceramic - Stained piece
18. Glass Etching Acid
19. Christmas Tree Ornament - Handmade (Not ceramic) 1 piece only
20. Christmas Decoration - Your choice (Not-for tree)

21. Gift Basket - Any occasion (no perishable items please) Hand made not bigger than 1' x 1'
22. Clothing - Any article hand decorated or hand painted
23. Rock Painting
24. Bead Work - Any article
25. Candles - One pair wax or 1 gel
26. Origami - Your choice
27. Plastic Canvas Art - Your choice
28. Covered Form - Picture frame, lampshade,-etc
29. Covered Photo Album - Wedding, baby,-etc
30. Tole Painting - Article may be purchased
31. Dream Catcher - Ring size not to exceed 12" diameter
32. Terra Cotta Pots - Item made from pots (each pot not to exceed 6" dial.)
33. Collection Table Display - Organized on a base, not to exceed 2'x2', MUST be covered with plastic wrap
34. Any article made from recycled materials; paper, egg cartons, tin cans,-etc
35. Any article made from natural materials; seeds, shells, grape vines, etc
36. Any other craft not listed.

Section: Spinning & Weaving

37. Hand Woven household item; rug, place-mat, cushion covers, etc
38. Hand Wove blanket
39. Hand Wove decorative item
40. Garment - Woven, not using hand spun yarn. May be hand dyed, if so, please indicate on entry form.
41. Felting - Item made from handmade felt

Section: Woodworking

42. Birdhouse - Handmade
43. Whittling & Carving - Any item
44. Lawn Ornament
45. Indoor Ornament
46. Theme; Christmas, Easter, Halloween,-etc
47. Any other item not listed

Section: Painting & Sketching

Pictures **MUST NOT** exceed 26"x26", including the frame. **ALL** pictures **MUST** be securely wired and ready for hanging alligator clips are **NOT** acceptable. Entries that do not meet these criteria **WILL NOT** be accepted.

48. Painting - Acrylics - Any subject
49. Painting - Oils - Any subject
50. Painting - Pastels - Any subject
51. Painting - Watercolours - Any subject
52. Painting - Oil or Acrylic - Person or-Persons
53. Painting - Watercolour or Pastels - Person or Persons
54. Pet Portrait - Any medium
55. Painting - Any medium - Abstract
56. Painting - Any medium - Fantasy
57. Sketching - Pencil or Charcoal - Person or Persons (portrait)
58. Sketching - Pencil or Charcoal - Any subject
59. Sketching - Pen and Ink - Any subject
60. Heritage - Any medium - Must include heritage item; old building, machinery, vehicle, etc.
61. Poetry - Exhibit not to exceed 11 1/2"-x-14"

**CLASS #300:
Floriculture
& Horticulture**

Co-Chairs:

Ernie & Charlene Bayer 604-576-9734
Lucy Law 604-574-4820

Exhibit Building:

Alice McKay Building

Entry Forms:

Entry forms for the **BENCH CLASSES** **MUST** be received in the office by 4:30pm on Friday, May 12th

Entry forms for the **GARDEN DISPLAY COMPETITION** **MUST** be received in office by 4:30pm on Friday, April 7th

Exhibits Received:

8:30am-5:30pm on Thursday, May 18th

Exhibits Pick up:

Monday, May 22nd 5:00pm-7:00pm,
Tuesday, May 23rd 9:00am-12:00 noon

Garden Display Competition - Sponsored by Stream Organics Management Kevin Falcon MLA

Open to all not for profit clubs, church groups, community groups etc. in the lower mainland

Prize Awards: 1st - \$500.00 2nd - \$300.00
3rd - \$200.00 4th - \$100.00

Floral Art Prize Awards:

1st - \$10.00 2nd - \$6.00
3rd - \$4.00

Best Entry in Floral Art Classes

Sponsored by Art's Nursery - \$25.00 & Rosette
High Points in Floral Art Classes

Sponsored by 99 Nursery - \$25.00 & Rosette
People's Choice Award: \$25.00

Decorative Art Prize Monies:

1st - \$10.00 2nd - \$6.00 3rd - \$4.00

Best Entry in Decorative Classes -

\$25 & Rosette

High Points in Decorative Classes -

\$25 & Rosette

Bench Class Prize Awards:

1st - \$5.00 2nd - \$3.00 3rd - \$2.00

Best Entry in Bench Classes

Sponsored by Gary Koppers - Homelife
Benchmark Realty Corp - \$25.00 & Rosette

High Points in Bench Classes

Sponsored by Potters Nursery Surrey - \$25.00 & Rosette

Most Unusual in Bench Classes

Sponsored by Holland Nursery - \$25.00 & Rosette

Best Exhibit in Cut Flowers

Sponsored by Holland Nursery - \$25.00 & Rosette



*99 Nursery
& Florists Inc.*

9376 King George Highway
Surrey, B.C. V3V 5W3
Tel: (604) 584-6555
Fax: (604) 589-8636
Toll Free 1-800-665-5506

Come Visit Our 10+ Acre Garden Center, Nursery & Florist!



Retail & Wholesale
"The Place for Plants"

tel: 604.882.1201
fax: 604.882.5969

email: info@artsnursery.com
web: www.artsnursery.com

8940 192nd Street, Surrey, B.C., Canada, V4N 3W8

Rules & Regulations:

1. Two or more persons may not exhibit from the same garden except in the decorative-section.
2. All entries are subject to the rules and regulations printed in the prize book.
3. All flowers exhibited in the open classes must be grown by the exhibitor.
4. Containers for the open classes supplied by the Association, or by the exhibitor. Plates to be supplied by the Association.
5. If a container of flowers collapses the show committee has the authority to remove them from the show.
6. In the A.O.V. classes where 4 or more of a-kind are entered a separate class will be-made.
7. No award will be given, where, in the judge's opinion the exhibit is not of sufficient merit.
8. Container grown plants - one plant per container and must be the property of the exhibitor for at least 90 days prior to the Fair. Container size - not more than 10" inside diameter.
9. If possible please use clear glass for vases. It makes watering much easier.
10. Where possible, plants and flowers to be named.

Abbreviations used in class descriptions:

CVA	"Colour Variation Allowed" - more than one colour of the same variety of flower.
AOV	"Any Other Variety" - other than called for in the schedule.
Distinct	All one variety.
Cut	A branch from the main stem to include leaves and buds and open flowers.
Stem	May have one or more flowers, but must NOT have side branches.
Bloom	One flower only - No shoots - No buds with foliage attached.

Abbreviations used in

Floral Art classes:

Arrangement	A floral arrangement consists of fresh cut material in a container.
Composition	May consist of dried, weathered or treated material with or without fresh material.
Design	May be either an arrangement or a composition, NO artificial flowers allowed.
Truss	A compact cluster of flowers or fruits growing from one stem, as pelargoniums, rhododendrons, tomatoes.

*Flowers and/or Vegetables:

- 1 Free pass for 4 or more exhibits in bench classes

Division A: General - Open to any age

Section: Flowers (all plants to be named if possible)

1. Allium - 1 vase - 3 cuts CVA
2. Azalea - 1 vase - 1 cut deciduous
3. Azalea - 1 vase - 1 cut evergreen
4. Columbines - 1 stalk
5. Iris Bearded - 1 stalk
6. Iris - 1 stalk - AOV
7. Lilac - 1 vase - 3 cuts CVA
8. Lily of the Valley - 1 vase - 5 cuts
9. Narcissus - 1 vase - 3 cuts CVA
10. Pansies - 1 vase - 2 cuts CVA
11. Rhododendron - 1 vase - 1 truss
12. Rose - 1 vase - 3 cuts - Any variety CVA
13. Tulips - 1 vase - 3 blooms CVA
14. Tulips - 1 vase - 3 blooms any other variety CVA
15. Flowering Shrubs - 3 cuts mixed
16. Flowering Shrubs - 3 cuts distinct
17. Garden Flowers - CVA
18. Any other flower - 3 cuts CVA

Closing Date Friday May 12th.

Open to all ages.

Section: Potted Plants

(all plants to be named if possible)

- All plants in this section must be container grown. Pots to be no larger than 10" in diameter
19. African Violet in bloom - 1 specimen
 20. Cactus or Succulent - 1 specimen
 21. Fern - any variety - 1 specimen
 22. Foliage plant - 1 specimen
 23. Geranium in bloom - 1 specimen
 24. Hanging indoor plant
 25. Hanging indoor plant in bloom
 26. Plant in bloom - 1 specimen
 27. Collection of house plants - 3 distinct kinds
 28. Any other variety of potted plant
 29. Orchid in bloom A.O.V.
 30. Potted tree - inside plant
 31. Peony - tree - 3 cuts distinct
 32. Peony - bush - 3 cuts distinct

Section: Vegetables

33. Rhubarb - 3 stalks - stalk left intact as pulled from the plant - tops trimmed to leave a 1" fan shape.
34. Collection of herbs - 3 distinct varieties in 3 vases
35. Any other variety of vegetable - 3 items

Section: Floral Art

Closing Date Friday May 12th.
Open to ages 16 years and up.

Floral Art Judging Criteria

Design	20
Balance	15
Scale	15
Colour	15
Condition	15
Originality	20
	<hr/>
	100

Driftwood, Figurines & Accessories may be used unless otherwise stated. See general rules and regulations.

36. Budding Beginners - A simple arrangement for the first time exhibitors
37. Create a rainbow of colour design
38. Novelty arrangement - flower and accessories allowed

N·A·T·S· Nursery Ltd.

"Specialized Growers and Wholesalers"



Rod M. Nataros, B.A.
Owner

e-mail: rod@natsnursery.com

24555 32nd Avenue
Langley, British Columbia
Canada V2Z 2J5

Tel: (604) 530-9300
Cell: (604) 830-6891
Fax: (604) 530-9500

HOLLAND NURSERY OF SURREY

PH: 604-572-7666

**16170 54TH AVENUE
SURREY BC V3S 2P1**

39. Kitchen Kapers – any flowers plus kitchen items design
40. Mint condition - an arrangement featuring 3 or more herbs
41. Pixie – a miniature arrangement of fresh flowers not to exceed 5" in any direction
42. Candle Power – design using one or more candles
43. Arrangement – using wood, stone and greenery
44. Design of your choice using fresh plant material
45. A line arrangement – ie. Vertical, L Shaped, Horizontal
46. Floral Arrangement/Design in a household item
47. Wreath – fresh or dried flowers may be used – maximum 18" in diameter
48. Northern Sunsets – A horizontal design using tints and tones of red
49. Abstract Design – using fresh plant material – accessories allowed.

CLASS #400: Home Cooking & Baking

- Chair:
Maxine Wilson 604-581-7808
- Co-chairs:
Pat Wilson 604-581-7808
Bel Carter 604-582-3353
- Exhibit Building:
Shannon Hall
- *Exhibits Forms:
Must be received by 4:30pm April 28th
- Exhibits Received:
4:30pm-8:00pm on Wednesday, May-17th
9:00am-12:00pm on Thursday, May 18th
- Entry Fees:
Refer to individual section information.
- Entry Pick Up:
5:00pm - 6:00pm on Monday, May 27th
9:00am - 3:00pm on Tuesday, May 23rd
For health reasons, exhibits will be thrown away at the conclusion of the exhibition, if not picked up
- Prize Awards:
Refer to individual section information.

Recipes:

Where a specific recipe is to be followed, refer to the list at the end of this division for recipe details.

All entries to be placed in appropriate sized (zip loc) freezer bags.

We reserve the right to refuse an entry that is not appropriate or displayed as-requested.

Division A: General - Open to any age

Section: Special Diet Recipes (Low cholesterol, Diabetic, etc) Please attach recipe to your exhibit.

1. Cookies - four (4)
2. Muffins - four (4)
3. Canning - one (1) pint
- 4A. Jam - one (1) jar
- 4B. Jelly - one (1) jar

Section: Pastry (Crusts to be made with shortening or-lard)

Note: We recommend pies baked on 7" tin foil pans.

5. Single crust pie - your choice of filling, ie; lemon, pumpkin, etc
6. Two crust pie - your choice of filling, apple, fruit
7. Graham wafer or other type of crumb crust pie - your choice of filling

Section: Cookies, Bars, Slices

8. Peanut Butter Cookies - (4) four
9. Oatmeal / Rolled Oat Cookies - (4) four
10. Chocolate Chip Cookies - (4) four
11. Boiled Raisin Cookies - (4) four - see recipe at end of this division
12. Cowboy Cookies - (4) four - see recipe at end of this division
13. Nanaimo Bars - (6) six 1" squares
14. Bar or Slice - (4) four - your choice, MUST be baked
15. Cookies or Slices - (4) four - your choice, NOT baked
16. Shortbread Cookies or Wedges - (4) four
17. Matrimonial Squares - (4) four 1 1/2" square each

18. Hermits - (4) four
19. Layered Cookies - (4) four - your choice; icing or jam filling
20. Any other type of cookie - (4) four

Display on 6" paper plate, in a Zip Loc bag

Section: Yeast Breads

Note: All bread to be baked in single loaf pans approximately 16 ounce size. NO mix or frozen dough. Bread to be exhibited in open end clear plastic bag, with twist tie

21. Brown Bread - (1) one loaf - NOT-machine made
22. White Bread - (1) one loaf - NOT-machine made
23. Raisin Bread - (1) one loaf - NOT-machine made
24. Multigrain Bread - (1) one loaf - NOT-machine made
25. Bread Machine Bread - (1) one loaf - your choice
26. Bread Buns - (4)-four-buns
27. Cinnamon Buns - (3) three buns

Note: Sections 28 through 35 inclusive - NO glaze or icing.

28. Lemon Loaf - (1) one
29. Zucchini Loaf - (1) one
30. Gingerbread
31. Bran Muffins - (3) three
32. Blueberry + Cranberry Muffins - (3) three
33. Mixed Fruit Muffins - (3) three
34. Any other variety of muffins - (3) three
35. Biscuits - (3) three - your choice

Display on 6" paper plate, in a Zip Loc bag

Section: Cakes

36. Carrot Cake
37. Angel or Chiffon Cake
38. Tomato Soup Cake
39. Mayonnaise Cake
40. Marble Cake
41. Coffee Cake
42. Yogurt Bundt Cake - see recipe at end of this division

Elisabeth's Chalet Restaurant



Josef & Elisabeth Huber
PROPRIETORS

Tel: 604-574-1474
Fax: 604-574-4303

17785 - No. 10 Highway,
Cloverdale, Surrey, B.C.
V3S 1E2
www.elisabethchalet.com



Expert Meat Cutting
Number ONE quality grain fed Beef

**GRAND' MAISON
BEEF FARM LTD.**

Custom Slaughter
Retail & Wholesale Meat Supplier
On-Site Store

5175 - 184th Street
Cloverdale, B.C.

Tel: (604) 576-8318
Fax: (604) 576-1290

43. Chocolate Cake - (1) one 8" or 9" layer
44. Raisin Loaf
45. Eggless / Butterless Cake
46. Any other variety of cake - NOT iced

Display on 6" paper plate, in a Zip Loc bag

Section: Specialties

Note: Sections 47 & 48 will be judged on cake and decoration. Sections 49,50,51 and 52 may be done on a form and will be judged on decoration only. Your choice what is under decorated cakes 47 through 52.

47. Mould or sculptured cake - decorated
48. Layer Cake - Iced
49. Decorated cake - NOT to exceed 24" in height
50. Advanced Decorating, ie; gumpaste, fondant, etc. Professionals
51. Advanced Decorating, ie; gumpaste, fondant, etc. Amateurs
52. Advanced Decorating - Instructors competition
53. Scones - (3) three - your choice
54. Macaroons - (3) three
55. Lemon Tarts - (3) three
56. Butter Tarts - (3) three
57. Tarts - (3) three - Any other variety
58. Jelly Roll - Approximately 5" length
59. Home made candy - (6) six 1" pieces

Display on 6" paper plate, in a Zip Loc bag

Section: Cooking with Honey

60. Muffins (3) three
61. Honey Chip Cookies - (4) four

Section: Cooking with Cheese

- 62A. Muffins
- 62B. Biscuits
- 62C. Yeast Buns

Section: Ethnic Baking

63. Your choice - please include origin and-recipe

Section: Microwave

64. Date Raisin Squares (4) four 1 1/2" pieces - see recipe at end of this division
- 64A. Any other variety of baking
- 64B. Candy

Section: Organization or Group Exhibit

Entry Fee: \$2.50
 Prize Award: 1st: \$25.00 2nd: \$20.00
 3rd: \$15.00 4th: \$10.00
 5th: \$8.00

65. Display to include the following articles:
 - (1) One Fruit loaf (not made with yeast)
 - (1) One Loaf of brown bread
 - (4) Four Muffins with fruit
 - (4) Four Varieties of cookies - drop or rolled (6 of each variety)
 - (1) One Apple pie (7"-9")
 - (1) Cake "COUNTRY FAIR" theme.

See recipe at end of this division (Yellow Cake)

The following may be from your 2005 canning season:

- (2) Two Jam or Jelly - 1 pint each different variety
- (1) One Canned Fruit - 1 pint
- (1) One Pickles - 1 pint - your choice
- (1) One Floral arrangement

Section: Canning

Exhibit Regulations:

- One pint of each, labeled and sealed in regulation size jars, screw bands and lids MUST be clean and free from rust. A-500ml jar is approximately ONE (1) pint and are acceptable.
- Regulations jars are asked for in order to set up an attractive display.
- Jams, jellies, marmalade and antipasto to be exhibited in 8-ounce or 250ml jar.
- An exhibitor may enter TWO (2) jars in each section providing each is a different variety. Your choice of variety unless otherwise stated. Previous year's fruit may be used.

Label jars and initial lids with the name of contents - No decorations

66. Jam - (1) one jar
 - A - Strawberry
 - B - Raspberry
 - C - Apricot
 - D - Plum
 - E - Any other variety
67. Jelly - (1) one jar
 - A - Blackberry
 - B - Raspberry
 - C - Currant
 - D - Apple
 - E - Blueberry
 - F - Grape
 - G - Any other variety
68. Marmalade - (1) one jar
69. Antipasto - (1) one jar
70. Canned Fruit - (1) one pint
 - A - Pears
 - B - Cherries
 - C - Peaches
 - D - Plums
 - E - Apricots
 - F - Any other variety
71. Canned Tomatoes - (1) one pint
72. Applesauce - (1) one pint
73. Chutney - (1) one pint
74. Canned Vegetables - (1) one pint
 - A - Beans
 - B - Carrots
 - C - Tomatoes - Stewed
 - D - Beets
 - E - Any other variety
75. Beet Pickles, whole, sliced or grated - (1) one pint
76. Dill Pickles - (1) one jar - quart jar acceptable
77. Relish - (1) one pint
78. Chili or Spaghetti Sauce - (1) one pint
79. Salsa sauce - (1) one jar, pint
80. Any other variety of pickle - (1) one jar
81. Any other variety of preserves - (1) one pint

Judging Scorecard for General Canning

Appearance	10 points
Colour & Clearness	20 points
Flavour	40 points
Interior & Texture	30 points



Gerry Spielmacher
 CFP, CLU, CH.F.C.

2008-7445 132nd Street,
 Surrey, BC, Canada V3W 1J8
 Tel (604) 596-9285
 Fax (604) 596-9265
 Cell (604) 626-8477
 gerry.spielmacher@canadafinancial.ca

Investments and Insurance
 www.canadafinancial.ca

Chartered Accountants
 Suite 200-17618 58th Ave,
 Surrey, B.C. V3S 1L3
 Phone: 604-576-9121
 Fax: 604-576-2890

MCMURRAY, ROBERTS, HEMING & WYBORN



Recipes for the Home Cooking & Baking Division

Boiled Raisin Cookies

Add 1 cup water to 2 cups raisins. Boil 5 min.
 Cream: 1 cup shortening adding, little by little, 2 cups white sugar.
 Add: 3 eggs. Beat well. Add 1tsp. vanilla and cooled raisin mixture.
 Sift together: 4 cups flour, 1tsp. baking soda, 1 tsp. baking powder, 1/2tsp. cinnamon, 1/2tsp. nutmeg, 1/4tsp. allspice, pinch of salt.
 Mix well then add 1 cup chopped nuts. Chill dough 1 hour.
 Drop by spoonfuls on greased baking sheet. Bake in oven 400°F for 12 to 15 min.
 Makes 5 dozen

Yellow Cake Mix

2 ¾ cups flour
 2 ½ tsps. baking powder
 ½ cup butter or margarine
 1 ¾ cups sugar
 1 ½ tsps. vanilla
 2 eggs
 1 ¼ cups milk
 Heat oven to 375 degrees F.
 Combine flour, baking powder and 1 teaspoon salt. Beat butter about 30 seconds. Add sugar and vanilla, beat until well combined. Add eggs, one at a time, beating one minute after each. Add dry ingredients and milk alternating to beaten mixture, beating after each addition. Turn into 2 - 8 inch or 2 - 9 inch pans. Bake At 357 degrees F over for 30 to 40 minutes or until done.

Cowboy Cookies

1 cup (250ml) Margarine	1 cup (250ml) Chocolate Chips
1 cup (250ml) 1/2 tsp (2ml) Salt	
White Sugar 1/2 tsp (2ml)	
1 cup (250ml) Baking Powder	
Brown Sugar	2cups (500ml)
2 cups (500ml) Flour	2 Eggs
1 cup (250ml) Raisins	1 tsp (5ml) Vanilla
	1 tsp (5ml) Baking Soda

Method:

Preheat oven to 350°F. Cream margarine and sugars. Add eggs to the creamed mixture; beat. Add remaining ingredients and combine until moistened. Bake for 10 - 12 minutes.

Date & Raisin Squares (for the microwave)

Filling:
 1 1/2 cups (375ml) Dates, chopped
 2 Tbsp (30ml) Raisins*
 * Replace raisins with additional dates, if-desired.

1cup (250ml) Water
1/2 cup (125ml) Lemon Juice

Crumbles:

1 cup (250ml) All Purpose Flour	1 cup (250ml) Rolled Oats
1/2 cup (125ml) Butter, softened	1/2 tsp Baking Powder
1 cup (250ml) Brown Sugar (lightly packed)	1/4 tsp (1ml) Salt

Method:

Filling:
 Combine dates, water, raisins and lemon juice in 4 cup (1L) measure. Cover with vented plastic wrap and microwave at HIGH (100%) for 4-6 minutes, or until boiling, stirring every 2 minutes. Dates should be soft. Let stand, covered 5 minutes; uncover and cool to lukewarm, stirring occasionally.

Crumbles:

Combine dry ingredients in mixing bowl. Cut in butter until mixture is crumbly. Press half of the mixture into an 8" square baking dish.

Spread with filling sprinkle with remaining crumble mixture, patting down lightly. Microwave at MEDIUM-HIGH (70%) 9-minutes, rotating 1/4 turn every 3-minutes. Remove from microwave; cover with aluminum foil. Let stand 10 minutes, so that squares will continue to cook. Uncover and cool completely on wire rack. Cut into 1 1/2" squares.

Yogurt Bundt Cake

2 1/4 cups (560ml) Flour	1/2 tsp (2ml) Salt
2 cups (500ml) Sugar	1tsp (5ml) Vanilla
1 cup (250ml) Plain or flavoured yogurt	1cup (250ml) Margarine
	3Eggs
	1/2 tsp (2ml) Lemon Juice
	Concentrate

Method:

Preheat oven to 325°F. Beat margarine. Add sugar and beat until fluffy. Mix in eggs. Add the rest of the dry ingredients alternately with yogurt. Add lemon juice and vanilla. Bake for 1 hour in a greased and floured bundt pan. When cooled, sprinkle with sifted icing sugar.

CLASS #500: Needlework

Chair:

Irma Kirner 604-850-5296

Co-Chair:

Rita Kettlewell 604-530-0939
 604-864-0531

Entry Forms:

Must be received by 4:30pm, April 28th. Early entry forms greatly appreciated.

Exhibits Received: 9:00am to 8:00pm, Tuesday, May 16th in the Shannon Hall.

Only one exhibit per class section per exhibitor.

Exhibit Pick up

9:00am - 3:00pm Tuesday, May 23rd

We reserve the right to refuse any article that appears to be unfinished, worn or soiled.

Division A	General - open to any age
Division B	Agnes 60 - 69 years
Division C	Agnes 70 - 79 years
Division D	Agnes 80 - 89 years
Division E	Agnes 90 years and over

See Children's Division and Classes for up to 17 years.

Section: Embroidery

(Entries in the embroidery section do not necessarily need to be framed)

1. Counted Cross Stitch - Pictures up to 7" x 9" (including frame)
2. Counted Cross Stitch - Pictures over 7"x 9" up to 12"x 15" (including frame)
3. Counted Cross Stitch - Pictures over 12"x 15" up to 24"x 36" (including frame, larger will be display only)
4. Cross Stitch - Any article, no pictures
5. Stamped Cross Stitch
6. Machine Embroidery
7. Cutwork
8. Petit Point
9. Needlepoint - Any article done in continental stitch

brother.

PFAFF®

Castle's 

CASTLE SEWING CENTRE

REPAIRS TO ALL MAKES
 QUILTING SUPPLIES-NOTIONS-LESSONS

18543 FRASER HWY.
 SURREY, BC V3S 8E7
 574-5333

EMAIL: info@castlesewing.com
 www.castlesewing.com
 TOLL FREE: 1-800-284-6680

10. Needlepoint - Any other needlepoint stitch
11. Ribbon Embroidery
12. Hardanger
13. Needle Punch or Pretty Punch
14. Brazilian Embroidery
15. Crewel
16. Plastic Canvas
17. Chicken Scratch
18. Long Stitch Embroidery
19. Any type of Embroidery not listed in sections 1 - 18

Section: Afghans

20. Afghan - Done in Afghan stitch
21. Afghan - Knit
22. Afghan - Crochet
23. Afghan - Made from granny squares
24. Afghan - Baby size - not over 36" x 48"

Section: Crochet

25. Sweater or Vest - Size 12 to adult
26. Baby Outfit - 2 or 3 pieces
27. Child's Sweater - 3 - 10 years
28. Child's Garment - 3 - 10 years
29. Doll or Toy
30. Doily - Maximum size 18" diameter, mounted on paper
31. Phentex - Any article
32. Filet Crochet
33. Luncheon or table cloth - Minimum size 36"
34. Crochet - made with wool - not listed in sections 25 - 33
35. Crochet - made with cotton - not listed in sections 25 - 33.

If flimsy mount on paper.

Section: Knitting

36. Sweater - Size 12 to Adult - made with bulky type yarn.
37. Sweater or Vest - Size 12 to Adult - not bulky
38. Baby Outfit - 2 or 3 pieces
39. Child's Sweater - 3 to 10 years
40. Child's Garment - 3 to 10 years
41. Doll or Toy
42. Knit Doily
43. Pentex - any knit article

44. Any article of clothing not listed in sections 36 - 43.
45. Any knit article other than clothing not listed in sections 36 - 43.

Note: Entries for the following sections MUST be done on a knitting machine.

46. Knit Garment - any size
47. Knit Article - no clothing

Section: Laces

48. Bobbin Lace
49. Tatting
50. Battenberg lace
51. Needle Lace
52. Lace Collar

Section: Cushions, Rugs and Wall-Hangings

53. Hooked Article
54. Cushion - Any technique - Must be made up
55. Article made by a challenged person
56. Any other rug or wall hanging - NOT hooked or quilted.

Section: Quilts

57. Quilt - Tied
58. Quilt - Hand quilted - twin to king size
59. Quilt - Machine quilted
60. Quilt - Any other technique, yo-yo, cathedral window, etc
61. Baby Quilted 240" (for example 60" x 60" or any combination of)
63. Boutique - Hand or machine quilted - aprons, kitchen articles, no clothing.
64. Clothing - Hand or machine quilted
65. Quilted Wall Hanging
66. Quilt Blocks (3) maximum size 16 inches, unfinished edges. Blocks to be as follows: one pieced, one appliqued, one your choice of technique. Blocks to be mounted on stiff paper or cloth for hanging. Size not to exceed 18" x 50".
67. Quilted accessory, eg. Purse, Belt, Bag, etc.
68. Left intentionally blank.

Section: Serger Made Garments

69. Lingerie
70. Scarf - must have rolled edge
71. Baby's Clothing - up to 2 years
72. Child's Clothing - up to 6 years
73. Child's Clothing - 6 - 12 years
74. Boy's Clothing - up to 12 years
75. Blouse or Shirt
76. Lady's suit or dress
77. Slacks, jumper or skirt
78. T-shirt
79. Any other article of clothing not listed in sections 69 - 78.

Section: Wearing Apparel

- not done on a serger, no serger finishing.
80. Dress - any size
 81. Apron
 82. Shirt or Blouse
 83. Skirt or Jumper
 84. Lingerie
 85. Baby's clothing - up to 2 years
 86. Child's clothing - up to 12 years
 87. Any article of clothing not listed in sections 80 - 86
 88. Any other sewn article - no clothing
 89. Garment made from used material
 90. Household articles or accessories made from used material

Section: Sportswear and Accessories

91. T-shirt
92. Bathing suit
93. Velour
94. Muscle shirt or halter top
95. Shorts or slacks
96. Jogging or Sweat suit
97. Sweat shirt
98. Clothing made from denim material
99. Any other sportswear garment not listed in sections 91 - 98
100. Tote or beach bag
101. Hat
102. Gloves or purse
103. Any other sewn accessory

Bruce Battistoni, R.D.M.
BATTISTONI DENTURE CLINIC

17739 - 56A Avenue
Cloverdale, B.C. V3S 1G4
(BEHIND SURREY MUSEUM)

604-576-1442
1-800-330-8131
(Toll Free)



HomeLife Benchmark Realty Corp.
6323 - 197 Street Langley, B.C. V2Y 1K8

Bus: (604) 530-4141

Fax: (604) 530-1687

Res: (604) 576-6623

e-mail: garykoppers@hotmail.com

website: www.garykoppers.com

Medallion Club Member

Prestige Club Member

Serving Langley, Cloverdale
and S. Surrey



GARY W. KOPPERS
"EXCELLENCE CLUB"

CLASS #600: Photography

Chair: Doug Jenkins 604-418-4791
 Exhibit Building: Shannon Hall
 Exhibits Received: 9:00am-8:00pm on Tuesday, May 16th
 Only one entry, per section, per person entering
 *Entry Forms: Must be received by 4:30pm April 28th
 *Entry Pick up: 9:30am - 5:30 on Tuesday May 23rd

For Amateur Photographers ONLY

Note: List size of picture, including mount paper, or cardboard, on the entry form. Also, on your entry form, state the type of camera used. (eg; 35M, 120, or digital) and the film speed (eg; 100, 200 or 400 ASA) If known.

1. NO pictures accepted smaller than 4" x 4"
2. NO pictures accepted larger than 8" x 12" Mounts no larger than 1" on all sides of the 8" x 12" pictures
3. No heavy cardboard or foam core board to be used
4. No framed picture accepted. Read Rules thoroughly. Pictures in the wrong class or section, improperly mounted, or out of focus will be rejected
5. All Prints to be mounted on cardboard or construction paper in harmonizing colour and size to compliment the picture
6. Tags will be supplied and attached to each exhibition
7. All photography must be done by the person exhibiting. Photos may be developed by a commercial photographer. Photos MUST not have been exhibited at a previous Cloverdale Exhibition
8. Photographs may be Digital, and Printed on a home computer/printer colour - balancing and cropping may be done (use of other photo editing software will go into the Special Effects section)

Section: Black and White Photography

1. Portraits - People
2. Scenery - Nature or other suitable scene
3. Flowers, or floral plants or shrubs
4. Special events - Fires, dance groups, family gatherings, parades, sports, etc
5. Animals including birds, insects, etc
6. Heritage/Pioneer Picture - Your choice of subject
- 7.
8. Special effects

Section: Colour Photography

9. Portraits - Close up or full length
10. Scenery - Pictures of nature, etc
11. Flowers - Single or floral arrangement and bouquets
12. Special Events - Auctions, dance groups, picnics, horse races, sports, games, etc
13. Animals including birds, insects, etc
14. Heritage/Pioneer Picture - Your choice of subject
- 15.
16. Special effects

Sponsors: **Photo Expert** -
 Scottsdale Mall - Delta
ABC Photolab -
 Guildford - Surrey
**Vancouver Focal Point
 Photography School**
Save On Foods -
 Scottsdale Mall

CLASS #700: 4-H Displays

Chair: Elaine Ingeberg 604-853-4042
 cell: 778-238-0099
 Exhibit Building: Cloverdale Ice Arena (Livestock building)
 *Entry Forms: Must be received by 4:30 pm, April 28, 2006 - **NO EXCEPTIONS**
 Educational Displays received: 10:00am - 8:00pm, Wed. May 17, 2006
 Educational Displays pick up: 10:00am - 8:00pm, Tues, May 23, 2006

Division 5: Open to Registered 4-H Club Members Only In The FRASER VALLEY REGION

4 - H Educational Displays

- One entry per registered club. There will be a monetary prize for the best 4 - H Educational Display awarded as follows: 4 - H Educational Displays - (Sponsored by Battistoni Denture Clinic)
 1st Place \$25.00 2nd Place \$20.00
 3rd Place \$15.00 4th Place \$10.00
 5th Place \$5.00

Educational Displays must be set up by a 4 - H member from the club entering the display. Educational Displays can not be mailed in or set up by a parent. A parent or leader may pick up the display on Tues. May 23rd.

4 - H Demonstrations

- One entry per registered club. There will be a monetary prize for the best 4-H Demonstration awarded as follows: 4 - H Demonstrations - (Sponsored by A.G.M. Beef Farm)
 1st Place \$25.00 2nd Place \$20.00
 3rd Place \$15.00

4 - H Speak & Show

Sponsored by A.G.M. Beef
 The Cloverdale Exhibition is offering an opportunity to 4-H members to present their Speak & Show presentation before an audience and judge during the Cloverdale Exhibition. Please include Member's name, Club, age and Title of Speak & Show.

Presentations of Demonstrations and Speak & Show will be scheduled in advance according to times Available. Microphone and tables will be available. Members to supply their own easel. Only those presentations registered by the entry deadline of April 28, 2006 will be scheduled. Preference will be given on a first come first serve basis. Gate passes will be supplied to members when they are informed of their scheduled presentation time.



MCMURRAY, ROBERTS, HEMING & WYBORN

Chartered Accountants
 Suite 200-17618 58th Ave,
 Surrey, B.C. V3S 1L3
 Phone: 604-576-9121
 Fax: 604-576-2890
 E-mail: jvernon@mrmhw.com

Joan Vernon
 Office Manager

Aldor Veterinary Clinic Ltd.

LARGE AND SMALL ANIMAL PRACTICE
 21773 Smith Crescent
 Milner, BC V0X 1T0

Dr. Christiane Pfaender, D.V.M
 and Associates

Tel: 604-530-0704

CLASS #101: Children's Arts & Crafts

Chair:
Jean Oostenbrug 604-856-8887

Co-Chairs:
Lynn Melnechenko 604-534-7838
Marian Powell 604-882-0760

Exhibit Building:
Shannon Hall

*Entry Forms:
Must be received by 4:30pm April 28th
Exhibits Received:
9:00am-8:00pm on Tuesday, May 16th

Sponsor: "Young at Arts" Gift Certificate

Division F: Preschool - Age 5 years & under Section:

1. Playdough Art
2. Cut and Paste Art
3. Any coloured picture from a colouring-book
4. Freehand Art - Title your work (crayon, felt pen, coloured pencil)
5. Finger Painting
6. Rock Painting
7. Greeting Card - Must be hand made
8. Any article made from natural materials; seeds, shells, grape vines, etc
9. Collection - Organized on a base, not to exceed 2'x2', MUST be covered with plastic wrap
10. Any article made from recycled materials; paper, plastic bottles, cans,-etc
11. Any other craft not listed

Division G: Age 6 & 7 years Section:

1. Playdough Art
2. Popsicle Stick Art
3. Any coloured picture from a colouring-book
4. Freehand Art - Title your work (crayon, felt pen, coloured pencil)
5. Painting - Title your work - Any medium - Any subject
6. Rock Painting
7. Cartoon - Your choice

8. Handmade Pottery - Any article
9. Greeting Card - Must be hand made
10. Beadwork - Your choice of item
11. Any article made from natural materials; seeds, shells, grape vines, etc
12. Any article made from recycled materials; paper, plastic bottles, cans,-etc
13. Collection - Organized on a base, not to exceed 2'x2', MUST be covered with plastic wrap
14. Any other craft not listed

Division H: Age 8 to 10 years Section:

1. Sketching - pencil or charcoal
2. Painting - Any medium, any subject
3. Cartoon - Your choice
4. Rock painting
5. Handmade Pottery - Any article
6. Mask - Any material
7. Paper Mache - Any article
8. Playdough
9. Greeting Card - Must be hand made
10. Beadwork - Any item
11. Woodwork - Your choice - not to exceed 2'x2'
12. Any article made from natural materials; seeds, shells, grape vines, etc
13. Any article made from recycled materials; paper, plastic bottles, cans,-etc
14. School Project - Must be heritage
15. Collection - Organized on a base, not to exceed 2'x2', MUST be covered with plastic wrap
16. Any other craft not listed

Division I: Age 11 to 14 years Section:

1. Sketching - pencil or charcoal
2. Painting - Any medium, any subject
3. Cartoon - Your choice
4. Painting - Felt pen or crayon
5. Rock Painting
6. Handmade Pottery - Any article
7. Mask - Any material
8. Paper Mache - Any article
9. Any article hand spun or woven
10. Greeting Card - Must be hand made
11. Beadwork - Any item
12. Woodwork - Your choice - not to exceed-2'x2'

13. Any article made from natural materials; seeds, shells, grape vines, etc
14. Any article made from recycled materials; paper, plastic bottles, cans,-etc
15. School Project - Must be heritage
16. Collection - Organized on a base, not to exceed 2'x2', MUST be covered with plastic wrap
17. Any other craft not listed

Division J: Age 15 to 17 years Section:

1. Sketching - pencil or charcoal
2. Painting - Any medium, any subject
3. Rock Painting
4. Cartoon - Your choice
5. Handmade Pottery - Any article
6. Mask - Any material
7. Paper Mache - Any article
8. Any article hand spun
9. Any article hand woven
10. Beadwork - Any item
11. Gel Candle (1)
12. Bees Wax Candles (2)
13. Metal work - Your choice - not to exceed-2'x2'
14. Woodwork - Your choice - not to exceed-2'x2'
15. Any article made from natural materials; seeds, shells, grape vines, etc
16. Any article made from recycled materials; paper, plastic bottles, cans,-etc
17. School Project - Must be heritage
18. Collection - Organized on a base, not to exceed 2'x2', MUST be covered with plastic wrap
19. Any other craft not listed
20. Greeting Card - Must be hand made or Computer Generated

CLASS #301: Children's Floriculture & Horticulture

Chair:
Lucy Law 604-574-4820

Co-Chairs:
Ernie & Charlene Bayer 604-576-9734

Exhibit Building: Alice McKay Building
Entry Forms:

Entry forms MUST be received in the office by 4:30pm on Friday, May 12th.

Exhibits Received:
8:30am-5:30pm on Thursday, May 18th

Exhibits Pick up:
5:00pm-7:00pm on Monday, May 22nd
9:00am - Noon Tuesday May 23rd

Division K: a Ages: 8 years &-under Section:

1. Unusual container with cut flowers and grasses



Kevin Falcon, M.L.A.
(Surrey-Cloverdale)
Province of British Columbia

Legislative Office:
Parliament Buildings
Victoria, B.C. V8W 9E2
Phone: 250 387-1978
Fax: 250 356-2290
e-mail: minister.transportation@gov.bc.ca
website: www.gov.bc.ca/tran

Constituency Office:
108 - 17700 - No. 10 Highway
Surrey, B.C. V3S 1C7
Phone: 604 576-3792
Fax: 604 576-3797
e-mail: kevin.falcon.mla@leg.bc.ca
website: www.kevinfalconmla.bc.ca

- Fun with vegetables - entry to look like an animal, bug, person, etc.
- Apple Witch
- Mr. or Mrs. Potato Head
- 1 Egg decorated in any theme - Real or plastic eggs may be used
- Floral arrangement using flowers, plants, grasses - accessories allowed
- Miniature arrangement - maximum 6" x 6" (flowers may be purchased)

Division K:b Ages: 9-15 years

Section:

- Unusual container with cut flowers and grasses
- Fun with vegetables - entry to look like an animal, bug, person, etc.
- Apple Witch
- Mr. or Mrs. Potato Head
- 1 Egg decorated in any theme
- Floral arrangement using flowers, plants, grasses - accessories allowed
- Miniature arrangement - maximum 6" x 6" (flowers may be purchased)

Helpful suggestions for the Apple Witch, Mr. or Mrs. Potato Head: Raisins and marshmallows make great eyes, liquorice cut into strips for hair and a carrot for a nose. Use a potato peeler to make holes for eyes, nose and mouth.

CLASS #401: Children's Baking

Chair:
Maxine Wilson 604-581-7808

Co-Chairs:
Pat Wilson 604-581-7808
Bel Carter 604-582-3353

Exhibit Building:
Shannon Hall

*Entry Forms:
Must be received by 4:30pm April 28th

Exhibits Received:
9:00am - Noon on Thursday, May 18th

Entry Pick Up:
5:00pm - 6:00pm on Monday, May 22nd
9:00 am - 3:00pm Tuesday, May 23rd

All exhibits will be thrown out at the end of the Exhibition for health reasons if not picked up.

All entries to be placed in appropriate sized (zip loc) freezer bags.

Age of exhibitor MUST be shown on the entry form. Exhibitors may only enter 1 item per class section.

Prize Awards: Refer to individual section information.

Please Note: For safety reasons we recommend all baking be done under the supervision of an adult. There are no canning sections due to the risk of scalding while using pressure cookers or hot water for blanching.

Division L

Section: Age 6 years and under

- Cup Cakes - decorated - (3) three
- Large Cookie or Square - (1) one article no smaller than 3". Your choice of decorations, ie; icing, smarties, chocolate chips, etc

Division M

Section: Age 7 to 12 years

- Cup Cakes - decorated - (3) three
- Chocolate Chip Cookies - (3) three
- Rice Krispie Creation - ie; clown, animal, etc - display on a 7" paper plate
- Popcorn Ball - decorated - use your-imagination
- Nutritious School Lunch - List your choice of foods on a card, as well as, putting them in a lunch container. Please do not put milk, fish or meats just the bottle and the bread and-butter

Division N

Section: Age 13 to 16 years

- Popcorn Balls - (3) three
- Rice Krispie Creation
- Muffins - (3) three
- Chocolate Cake - 1 layer 8"
- Graham Wafer Crust Pie - 5"-7" diameter - Your choice of filling

- Tarts - (3) three - Your choice of filling
- Buns (yeast) - (3) three
- Cooking with Cheese - (3) three - Scones, muffins, etc.
- Homemade Candy - (6) six 1" squares
- Cookies - (6) six

CLASS #501: Children's Needlework

Chair:
Irma Kirner 604-850-5296

Co-Chair:
Rita Kettlewell 604-530-0939

Exhibit Building:
Shannon Hall

*Entry Forms:
Must be received by 4:30pm April 28th

Exhibits Received:
9:00am-8:00pm on Tuesday, May 16th

Division O: 9 Years and under

Division P: 10-13 years

Division Q: 14-17 years

Age of exhibitor MUST be shown on the entry form. Exhibitors may only enter 1 item per class section.

Section:

- Embroidery - Your choice
- Hooked article - Your choice
- Knitting - Your choice
- Crocheting - Any article
- Sewing - Any Article not clothing
- Clothing Sportswear (eg; t-shirt, shorts, jump suit etc.)
- Weaving - Your choice
- Cross Stitch - Any article
- Night Clothing - Your choice
- Outerwear - Your choice (eg; coats, jacket, ski pants, etc.)
- Stretch And sew garment - your choice
- Any type of handwork not listed in sections 1 through 9

CLASS #601: Child & Youth Photography

Chair:
Doug Jenkins 604-418-4791

Exhibit Building:
Shannon Hall

*Entry Forms:
Must be received by 4:30pm April 28th

Exhibits Received:
9:00am-8:00pm on Tuesday, May 16th

List size of picture, including mount paper, or cardboard, on the entry form. Also, on your entry form, state the type of camera used. (eg; 35M, 120, or digital) and the film speed (eg; 100, 200 or 400 ASA) if known.

Potter's

Store Locations:

3231 - 152nd Street, Surrey, BC Tel: 535-2209
12530 - 72nd Avenue, Surrey, BC Tel: 572-7706
4947 - 192nd Street, Surrey, BC Tel: 576-5011

1. NO pictures accepted smaller than 4" x 4"
2. NO pictures accepted larger than 8" x 12" Mounts no larger than 1" on all sides of the 8" x 12" pictures
3. No heavy cardboard or foam core board to be used
4. No framed picture accepted. Read Rules thoroughly. Pictures in the wrong section, improperly mounted, or out of focus will be rejected
5. All Prints to be mounted on cardboard or construction paper in harmonizing colour and size to compliment the picture
6. Tags will be supplied and attached to each exhibition
7. All photography must be done by the person exhibiting. Photos may be developed by a commercial photographer. Photos MUST NOT have been exhibited at a previous Cloverdale Exhibition



Division R: Age 15 years and under
Section: Black & White or Colour Accepted

1. Flowers, Bouquets or Plants
2. People; family, friends, school chums,-etc
3. Scenery - Your choice
4. Animals; dogs, cats, horses, insects, birds, reptiles, etc

Sponsors:

- Photo Expert** - Scottsdale Mall - Delta
Pizza Hut - Scottsdale Mall - Delta



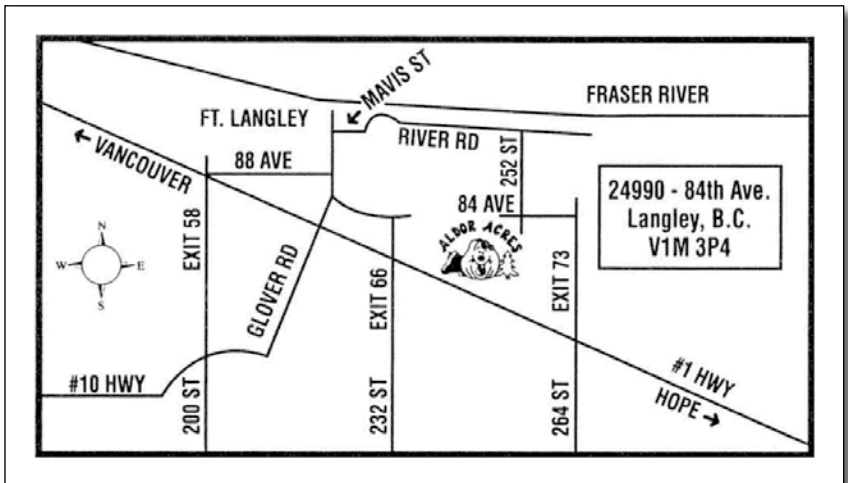
ALDOR ACRES LTD.

THE ANDERSON'S

Albert & Dorothy Anderson

- Pumpkins
- Apples
- Dairy Centre
- Hayrides
- Animal Displays
- Christmas Trees
- Special Events

Phone: 604-888-0788
Fax: 604-882-0719
Email: aldoracres@telus.net
www.aldoracres.com



Photographic Adventure

Specializing in Portraits in Nature

Weddings Reunions Family Gatherings
Sports Teams Calenders Graduations
Birthdays Portraits Headshots

Doug Jenkins 604 418 4791



\$2.0 billion in gaming revenues

\$176 Million

Operating Costs Including GST

\$409 Million

Paid to Lottery Retailers and
Casino and Bingo Operators

\$623 Million

Lottery and Bingo Prizes

\$811 Million

Funding for Provincial and
Community Programs



To learn more about where the money goes, visit bclc.com



Rules & Regulations

Administration Office:

604-576-9461

Hours: 8:30am-4:30pm

Monday to Friday

Event Dates:

May 19th to 22nd, 2006

Entry Form

Closing Date:

4:30pm, April 28th

(For all classes except Horticulture/Floriculture)

Exhibits Received:

Refer to specific division.

Number of entries:

One (1) only entry per class section per exhibitor. Please read the rules carefully to ensure your exhibits are entered in the correct class division.

Entry Fees:

No entry fees unless otherwise stated.

Exhibit Pick Up:

9:00am-3:00pm Tuesday,

May 23rd or as listed in class.

Horticulture/ Floriculture Only

Entry Closes:

4:30pm Friday, May 12th

Exhibit Pickup:

Monday May 22nd 5:00pm - 7:00pm

Tuesday May 23rd 9:00am - Noon

The exhibition committee retains the right to refuse or exclude any inappropriate item submitted for the exhibition

These General Rules and Regulations apply to all exhibitors, Employees, performers, tradesmen, and concession personnel, with no exception unless noted or approved by the exhibition committee, such decisions are final.

1. Any exhibitor who violates any of the General Rules and Regulations or any of the rules printed in this Prize list, and upon the decision of the Exhibition Committee, shall be liable to forfeiture of any prize money and awards they may have been awarded, and may be barred from further competition for a period decided by the Exhibition Committee.

2. No Exhibitor shall handle or interfere with any exhibit once the Exhibition Committee has set up the displays. No exhibit shall be removed, changed or sampled until the stated release time of said exhibits.

3. All livestock and other exhibits must remain in the barns, or display area, until release time as scheduled unless special permission is granted to remove said exhibit at an earlier time. All exhibitors failing to abide by this rule will automatically forfeit all of any prize money and awards.

4. Exhibitors of animals, machinery in motion and other exhibits liable to cause accidents, injury or damage to property or to persons coming in contact with them, shall guard their exhibits and protect the public from coming in contact therewith; and every such exhibitor shall indemnify the Cloverdale Rodeo and Exhibition, and the City of Surrey, from and against all claims and demands, costs, charges and expenses which it may incur, suffer or be put to; by reason of any accident or of any person being injured or suffering damage through or by reason of any accident or of any person being injured or suffering damage through of by reason of any such exhibit, performance or concession not being properly guarded or the public not being properly protected therefrom.

5. The Cloverdale Rodeo & Exhibition, and the City of Surrey, shall not be liable for any loss to any exhibitor occasioned:

a) By fire, accident, condition of structure, or the negligence of any exhibitors or officials or otherwise, howsoever.

b) No claim for injury to any person or property shall be ever asserted or suit instituted or maintained against the Association, its officers, volunteers or their agents, by or on behalf of any visitor, exhibitor or any person, firm or corporation, or their agents, representatives servants or employees, having license or privilege to visit or exhibit on the grounds of the Exhibition or occupying space therein.

6. All Exhibits shall be under the control and direction of the officials concerned, but SOLELY AT THE RISK OF THE EXHIBITOR, all exhibits or stands MUST be removed by the time specified, or otherwise they become the property of the Exhibition for disposal. Buildings will be open the morning following the close of the Exhibition upon request. Arrange with the Exhibition office.

7. Any Exhibitor who may desire to enter a protest must enter such protest in writing prior to the close of the Exhibition, and must be accompanied by \$50.00 cash or certified cheque. Such protests must state plainly the cause of complaint and be delivered to the manager. In case the protest is not substantiated, the \$50.00 is forfeited and shall be added to the Exhibition funds.

8. A judge's decision representing his/her individual preference is not protestable unless it is alleged to be in violation of the rules.

9. The judges will be appointed by the Exhibition prior to the event and will receive a letter of information telling of their respective duties, when and where to report on arrival upon the grounds. Judging will commence as close as possible to the times stated in the Prize List (see division rules). Judges are requested to become familiar with the rules and regulations of the Exhibition.

10. Any Exhibitor or his agent who show disrespect or interferes with the judge during the performance of his/her duties shall be liable to any or all forfeiture of prize money and subject to such penalties as may be made by the General Manager and the Exhibition Committee, after the act has been considered.

11. Any person who shall attempt to interfere with the judge or influence the judge while in discharge of his duties or who at any time on the Exhibition premises shall use any contemptuous or abusive language to any judge or official at the Exhibition shall forfeit his/her right to any and all prize money to which he/she may have otherwise been entitled to, and may be excluded from exhibiting for one year thereafter. Judges and officials are especially requested to report any breach to this rule to the General Manager immediately.

12. The decision of judges is final in all cases except where fraud, misrepresentation of collusion, not discovered at the time of judging or making the award, is given. In such cases the Manager and the Exhibition Committee or such referee as may be appointed, may make the final decision.

13. Prize money will be mailed July 21st, 2006. Exhibitors who do not receive their prize awards within a reasonable amount of time after July 21st, please notify the Cloverdale Exhibition office. The Exhibition will not be responsible for the trophies and prize awards offered by individuals, clubs, companies, societies or for the payment of special premiums offered on behalf of anyone except the Cloverdale Exhibition or the Lower Fraser Valley Exhibition Association. Prize monies payable in Canadian funds.

14. We would request that all prize cheques be cashed promptly on receipt of same. The Exhibition Association reserves the right to put a Stop Payment on all prize cheques NOT cashed within 90 days of date issue.

15. While the Exhibition will take every precaution to ensure the safety of articles and stock on exhibition, let it be distinctly understood that the owners are required to assume all risks and should any article of animal be accidentally injured, lost or stolen, the Exhibition Association will render all assistance in its power to bring about recovery of same, but will not be held responsible for such loss and will not recognize any claim for payment of the value of any portion thereof.

16. Exhibits not accompanied by their owners or their agents, must be considered entirely at the owner's risk and may be addressed to the exhibitor care of the Exhibition Association, who will receive them at the grounds if all cartage and other charges have been prepaid.

17. No accounts payable will be considered unless accompanied by Exhibition Association purchase order properly authorized by the manager.

18. Security will be on the grounds the day prior to the opening of the Exhibition until 4:30 pm the day following the close of the Exhibition. Exhibitors and/or concessionaires are reminded to remove all goods prior to that time.

19. No person under the age of FOURTEEN (14) will be permitted to remain on the grounds after 10:00 pm unless under the supervision of their parents.

20. Security will enforce curfew rules in all buildings 10:00 pm to 10:00 am.

21. ALL entries MUST be made on our official entry form and either brought to the Exhibition Office or mailed to 6050A 176th St., Surrey, B.C. V3S 4E7 along with the correct entry fees prior to the closing date of entries. For more information please call 604-576-9461.

22. Any person may become a member of the Exhibition Association by submitting his/her name and paying the annual membership fee of \$10.00

23. Grounds admission – see front page.

24. The Exhibition Committee reserves the right to limit the numbers of entries in each category, if entries exceed space available.

25. Exhibits entered MUST be the bonafide work of the Exhibitor and MUST NOT have been shown at a previous Cloverdale Exhibition. Should a dispute arise as to whether or not the work is the Exhibitors own, the Exhibitor may be required to sign an Affidavit stating that he/she has done the work. All articles must be clean or they will not be judged or displayed. All articles must be finished within the past year. NO KITS allowed unless specified. The Committee in charge can only disqualify competition entries. All painting MUST be securely wired for hanging.

26. There will be a monetary prize to the most attractive and educational Livestock Display.



ID # _____
For Office Use Only



MORE THAN JUST A RODEO - A COUNTRY FAIR ENTRY FORM 2006

(To be thoroughly filled out and mailed or faxed with correct entry fee, to:)

CLOVERDALE EXHIBITION

6050A - 176th Street, Surrey, B.C. V3S 4E7

Hand deliver to: Admin Office, Alice McKay Building 6050A 176th Street, Cloverdale

Fax to 604-576-0216

Exhibitor's Name: _____ Age: _____ (if applicable)

Address: _____

Please Print _____

(postal code)

(telephone number)

Please give address in full, using mailing address if it differs from physical address.

PLEASE READ DIVISION RULES CAREFULLY FOR EXHIBIT ARRIVAL AND RELEASE TIME.

All items must be made/ grown by the person entering. All items are to be picked up as stated in the prize book.
If removed early you forfeit any prize/ prize monies.



No. of Items	Class	Division	Section	Description of Article	Display Only (please check)	Entry Fees
1						
2						
3						
4						
5						
6						
7						
8						
9						
10						
11						
12						
13						
14						

TOTAL \$:

SIGNED: _____

The owner of exhibits releases the Lower Fraser Valley Exhibition Association from liability from loss or damage while exhibits are on the grounds.

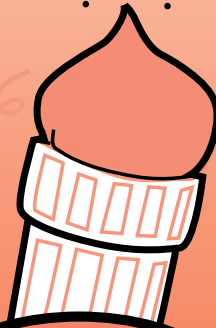
Please Note: Display Only items are items previously shown at the fair and received a ribbon, or have been made over 2 years ago. These items do not pay an entry fee, nor are they judged.



WEST COAST AMUSEMENTS



RIDES

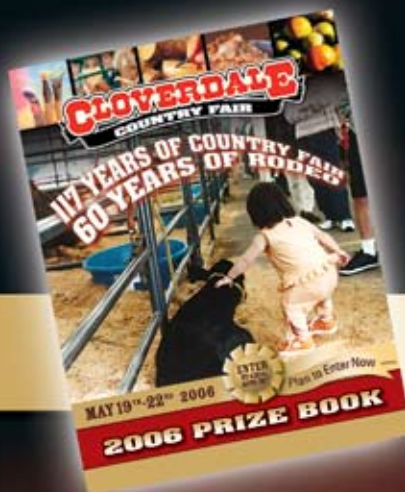


GAMES



CONCESSIONS

**BE
PART
OF IT
ALL!**



Start sewing,
growing, building,
baking, crafting, painting
and more ..

**START PLANNING
NOW!**

REMEMBER ENTRY FORM
CLOSING DATE:

4:30pm April 28th